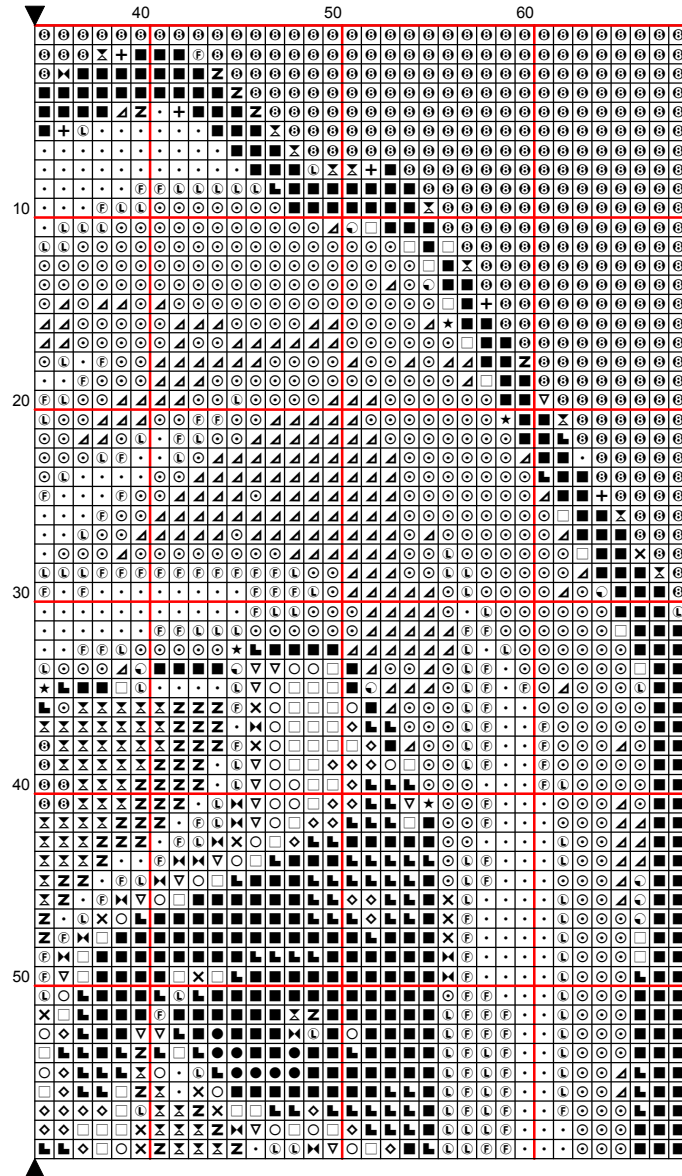
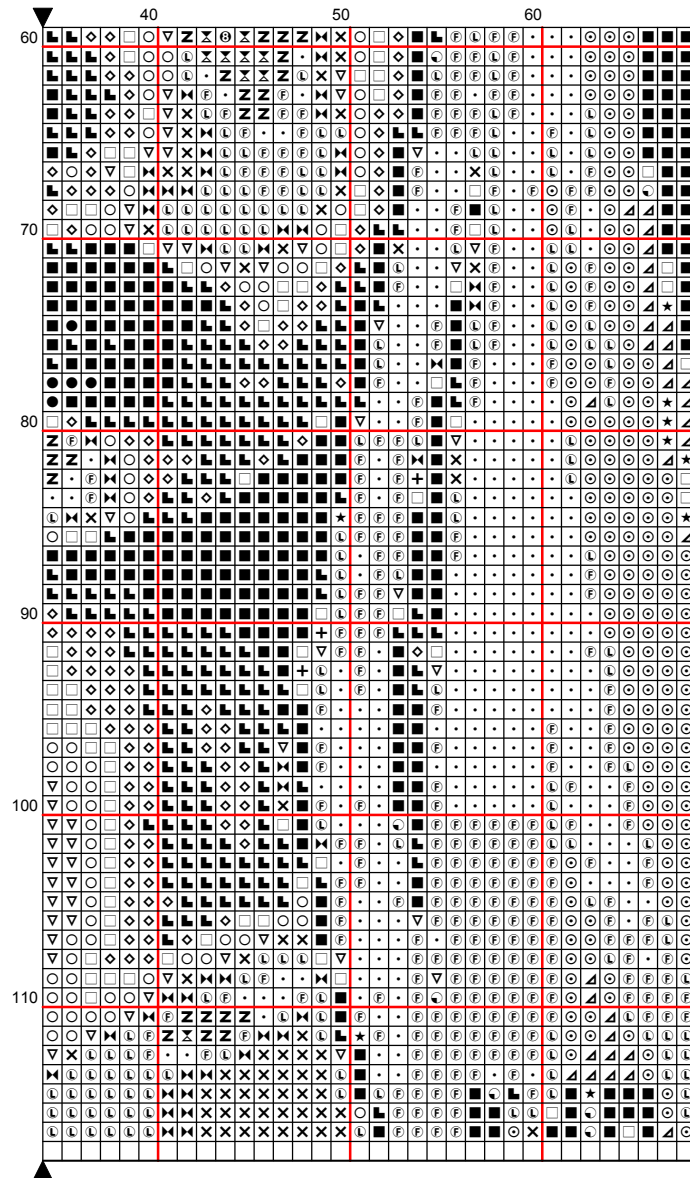


[illegible]



[illegible]



Instructions and Symbol Key for Design "Mellow"

Fabric: 14 count Aida

Stitches: 68 x 117 **Size:** 4.86 x 8.36 inches or 12.34 x 21.23 cm

Colours: DMC

Use **2** strands of thread for cross stitch

<u>Sym</u>	<u>No.</u>	<u>Colour Name</u>	<u>Sym</u>	<u>No.</u>	<u>Colour Name</u>
■	300	Mahogany	●	221	Mars red
◇	434	Cigar brown	⬇	975	Chestnut brown
□	831	Green bronze	○	420	Hazelnut
+	167	Dark mustard brown	▽	371	Green plains
▲	642	Earth grey	×	612	String brown
⊙	3032	Dark antique silver	⌘	372	Light mustard
•	524	Light grey green	⚡	3024	Pale steel grey
⌘	3033	Antique silver	⦿	3862	Mocha brown
★	640	Green grey	Ⓟ	3782	Gingerbread brown
Ⓛ	613	Rope brown	Ⓢ	3865	Winter white

This chart has been designed and printed with our best intentions of being without mistakes. However, the possibility of human error, printing mistakes or the variation of individual stitching does exist, and we regret that we cannot be responsible for this.

Produced using Cross Stitch Professional for Windows www.dpsoftware.co.uk
Copyright © Gala 2010 All rights reserved.